

# Mark 2 EPROM Upgrade Procedure

---

## Introduction

This sheet outlines the steps necessary to perform a software upgrade on the Mark 2 Moisture Analyzer. **Caution: All stored programs and user names will be deleted.** You may save your stored programs by downloading to a PC or call Omnimark Instrument Corp. at 1-800-835-3211.

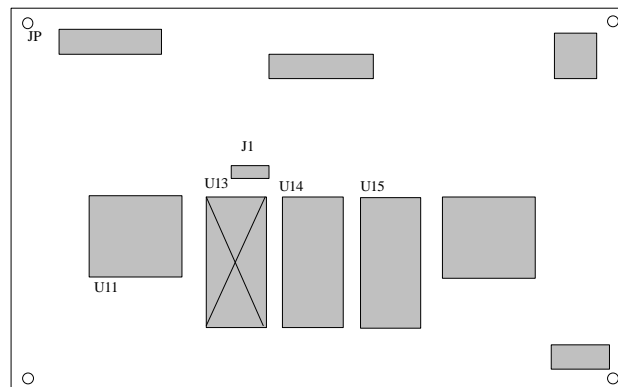
## Tools Required

Special Omnimark driver consisting of the standard head driver and hex head driver. Chip removal/installation tool.

## Software Prom Installation Procedure

1. Remove Mark 2 cover by removing the tool grill screws. Remove the perforated grill. Remove the hex screw located in the center of the unit in the grill opening towards the front of the unit. The cover can now be removed and placed in the upright position behind the unit.
2. Remove the existing eprom with the removal tool. The eprom U13 is a socketed device with a revision label located on the main board directly below the keypad.

Mark 2 Main PCB



3. Install the new eprom with the chip notch towards the top or front of the unit. Be careful to insert all pins in the socket and avoid bending any pins. Locate the jumper directly above the eprom. The jumper should be placed on the two right most pins of the three pin connection J1. Older Mark 2 units may have the jumper on the two left most pins.
4. Replace Mark 2 cover by following step 1 in reverse order.

# Mark 2 EPROM Upgrade Procedure

---

## Software Initialization Procedure

1. Initialize the software using the following process:

Key	Menu Item	Description
2	2> SETUP	Setup Menu 1
8	8> SECURITY	Security Menu
“.”	Decimal Key	Enter QC Software section
"QC"	Alpha Entry	Enter QC using Alpha-Numeric entry method
e	Exit Security	Exit the Security Menu
e	Exit Setup 1	Exit Setup Menu 1 back to the main screen
“.”	Decimal Key	Enables the QC Menu
5	5> INIT	Initializes Mark 2
“TEST/START”	Exit QC Menu	Exit the QC Menu

### ***Disable the QC Software:***

Key	Menu Item	Description
2	2> SETUP	Setup Menu 1
8	8> SECURITY	Security Menu
4	4> CLEAR DATA	Clear System Data
1	1> CLEAR ALL DATA	Disable QC Software Menu
e	Go to Main Menu	Default Main Menu Screen

2. Power the Mark 2 Off / On